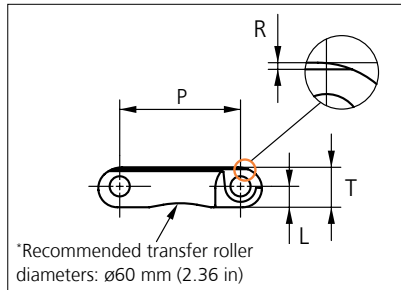
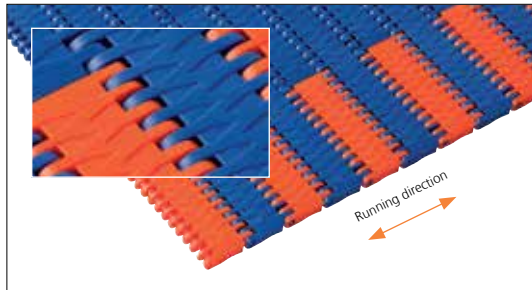


Plastic Modular Belt

Series **uni JCB** Type **Y**



Straight running belt
 Nominal pitch: 25.4 mm (1.00 in)
 Surface type: Y Pattern surface grid
 Surface opening: 0%
 Backflex radius: 25.0 mm (0.98 in)
 Pin diameter: ø4.0 mm (0.16 in)

STANDARD

Belt material & color	POM SLF B
Pin material & color	PA6.6 B

	mm	in		mm	in
P (Nominal)	25.4	1.00	T	8.4	0.33
L	4.4	0.17	R	0.4	0.02

Pom SLF Orange edge links 76 mm (3 in) wide mounted on alternating pitches along both belt edges are standard for all belt widths from 228 mm (9 in) wide and above. The 153 mm (6 in) wide belt is only assembled using blue links.

Belt width		Permissible tensile force (Belt/pin material)		Belt weight (Belt/pin material)		*Min No drive sprocket per shaft	Number of wear strips (min no)	
		POM SLF/PA6.6		POM SLF/PA6.6			***Carry (pcs)	**Return (pcs)
mm	in	N	lbf	kg/m	lb/ft			
153	6.0	5362	1205	1.0	0.67	2	2	2
229	9.0	8029	1805	1.5	1.00	2	2	2
306	12.0	10696	2404	2.0	1.33	3	3	2
382	15.0	13363	3004	2.5	1.67	3	3	2
458	18.0	16030	3604	3.0	2.00	4	4	2
534	21.0	18697	4203	3.5	2.33	4	4	2
610	24.0	21364	4803	4.0	2.67	5	5	3
687	27.0	24031	5402	4.5	3.00	5	5	3
763	30.0	26698	6002	5.0	3.33	6	6	3
839	33.0	29365	6601	5.5	3.67	6	6	3
915	36.0	32032	7201	5.9	4.00	7	7	4
991	39.0	34699	7800	6.4	4.33	7	7	4
1068	42.0	37366	8400	6.9	4.66	8	8	4

Additional standard belt widths are available in steps of 76.2 mm (3.00 in).

1983	78.1	69405	15602	12.9	8.66	14	14	7
------	------	-------	-------	------	------	----	----	---

Additional standard belt widths are available in steps of 76.2 mm (3.00 in).

2974	117.1	104090	23399	19.3	12.99	20	20	10
------	-------	--------	-------	------	-------	----	----	----

For belt widths above 2974 mm please contact our customer service to review packaging and handling. General belt tolerance is +0/-0.4% at 23°C/73°F and 50% RH. For exact belt width contact Customer Service.

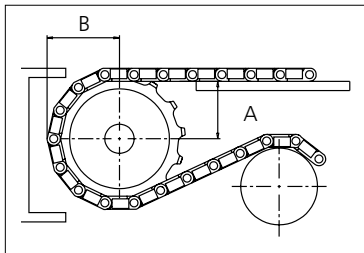
- *Max. Load per Drive Sprocket. Belt material: POM-SLF 2300 N (517 lbf).
- **Return belt support via gravity rollers recommended to avoid marking safe walk belt surface.
- ***Full Carry way Support (FS) deck of wearstrip material recommended for safe walk belts.



Sprocket

No of teeth	Bore size									Overall diameter		Pitch diameter		Hub diameter		A-dimension		B-dimension		Single row/Two way	Double row/Two way	Molded PA6 LG	Machined PA6 N
	Pilot bore																						
	mm	25.4	30.0	31.8	38.1	40.0	60.0	63.5	mm	in	mm	in	mm	in	mm	in							
Z10	x		●	●	●	■	●			80.3	3.16	82.2	3.24	65.0	2.56	34.7	1.36	45.5	1.79	x		x	
Z12	x		●	●	●	■	●			96.8	3.81	98.1	3.86	70.0	2.76	43.0	1.69	53.5	2.11	x		x	
Z15	x			●	●	■	■	■	■	121.5	4.87	122.2	4.81	¹ 70.0 ² 100.0 ² 104.0	¹ 2.76 ² 3.94 ² 4.09	55.4	2.18	65.5	2.58	x		x	
Z18	x			●	●	■	■	■	■	146.0	5.75	146.3	5.76	¹ 70.0 ² 104.0 ¹ 120.0	¹ 2.76 ² 4.09 ¹ 4.72	67.6	2.66	77.5	3.05	x		x	
Z19	x			●	●	■	■	■	■	154.2	6.07	154.3	6.07	¹ 70.0 ¹ 120.0	¹ 2.76 ¹ 4.72	71.7	2.82	81.6	3.21	x		x	

● Moulded sprocket ■ Moulded sprocket ■ Moulded sprocket



Same sprocket type as for the uni QNB serie.
 Other sprocket sizes are available upon request.
 Two-part sprockets are available upon request.
 Round bores are always delivered with keyway.
 Other bore sizes are available upon request.
 uni Retainer Rings: See uni Retainer Ring data sheet.
 Width of tooth = 10.0 mm (0.39 in)
 Width of sprocket = 25.0 mm (0.98 in)

Max load per sprocket shown does not take bore size into account.
 Please also ensure that sufficient size shaft is chosen for corresponding load.

For correct sprocket position: See uni Assembly Instructions for uni JCB.
 For more detailed sprocket information, contact Customer Service.

Non standard material and color: See uni Material and Color Overview.