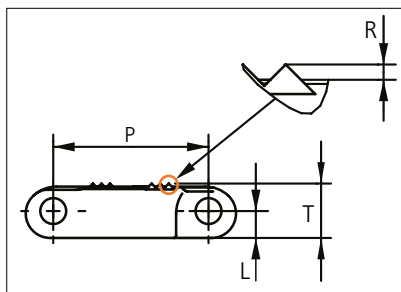


# Plastic Modular Belt

Series **uni LPB** Type **Rough** Material **POM-NLAS**



Straight running belt  
 Nominal pitch: 25.4 mm (1.00 in)  
 Surface type: Rough (R10)  
 Surface opening: Closed  
 Backflex radius: 25.0 mm (0.98 in)  
 Pin diameter: 4.0 mm (0.16 in)

Belt material & color	POM-NLAS <b>K</b>		mm	in		mm	in	
		P (Nominal)	25.4	1.00	R	0.9	0.04	
Pin material & color	PA6.6 <b>B</b>		L	4.4	0.17	T	8.9	0.35

Non standard material and color: See uni Material and Color Overview.

Alternative pin and lock materials: Lockpin: PBT **LG**

Belt width		Permissible tensile force (Belt/pin material)		***Belt weight (Belt/pin material)		Min No drive sprocket per shaft	Number of wear strips (min no)	
		POM-NLAS/PA66		POM-NLAS/PA66			**Carry (pcs)	**Return (pcs)
mm	in	N	lbf	Kg/m	lb/ft			
153	6.0	5355	1204	1.0	0.68	2	1	1
229	9.0	8015	1802	1.5	1.02	2	1	1
305	12.0	10675	2400	2.0	1.35	3	3	2
381	15.0	13335	2998	2.5	1.69	3	3	2
457	18.0	15995	3596	3.0	2.03	4	4	2
533	21.0	18655	4194	3.5	2.36	4	4	2
609	24.0	21315	4792	4.0	2.70	5	5	3
685	27.0	23975	5390	4.5	3.04	5	5	3
761	30.0	26635	5988	5.0	3.38	6	6	3
837	33.0	29295	6586	5.5	3.71	6	6	3
913	35.9	31955	7183	6.0	4.05	7	7	4
989	38.9	34615	7781	6.5	4.39	7	7	4

Additional standard belt widths are available in steps of 76.0 mm (2.99 in). Additional non-standard belt widths are available in steps of 76.0 mm (2.99 in).

1978	77.9	69230	15563	13.1	8.77	14	14	7
------	------	-------	-------	------	------	----	----	---

Additional standard belt widths are available in steps of 76.0 mm (2.99 in). Additional non-standard belt widths are available in steps of 76.0 mm (2.99 in).

2966	116.8	103810	23336	19.6	13.16	20	20	10
------	-------	--------	-------	------	-------	----	----	----

General belt tolerance is +0/-0.4% at 23°C/73°F and 50% RH. For exact belt width contact Customer Service. Non standard belt width on request.

\*Max. Load per Drive Sprocket. Belt material: POM-NLAS 2300 N (517 lbf).

\*\*Full Carry way support (FS) deck of wearstrip material recommended for safe walk belts.

\*\*\*Return belt support via free running gravity rollers recommended to avoid marking safe walk belt surface.

Surface grip in material NLAS (R10).

□ = Single Link



STANDARD

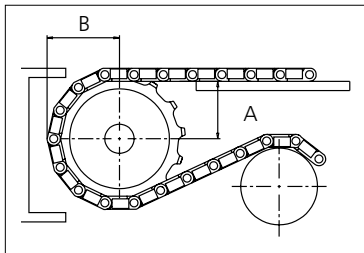
STRAIGHT RUNNING

PITCH 25.4 MM/1.00 IN

## Sprocket

No of teeth	Bore size									Overall diameter		Pitch diameter		Hub diameter		A-dimension		B-dimension		Single row/Two way	Double row/Two way	Molded PA6 LG	Machined PA6 N	
	Pilot bore	Bore size																						
		mm	25.4	30.0	31.8	38.1	40.0	60.0	63.5	mm	in	mm	in	mm	in	mm	in							
Z10	x		●	●	●	■	●			80.3	3.16	82.2	3.24	65.0	2.56	34.7	1.36	45.5	1.79	x		x		
Z12	x		●	●	●	■	●			96.8	3.81	98.1	3.86	70.0	2.76	43.0	1.69	53.5	2.11	x		x		
Z15	x			●	●	■	●	■	2	1	121.5	4.78	122.2	4.81	70.0 100.0 104.0	2.76 3.94 4.09	55.4	2.18	65.5	2.58	x		x	
Z18	x			●	●	■	●	■	2	1	146.0	5.75	146.3	5.76	70.0 104.0 120.0	2.76 4.09 4.72	67.6	2.66	77.5	3.05	x		x	
Z19	x			●	●	■	■	■	1	1	154.2	6.07	154.3	6.07	70.0 120.0	2.76 4.72	71.7	2.82	81.6	3.21	x		x	

● Moulded sprocket ■ Moulded sprocket ■ Moulded sprocket



Same sprocket type as for the uni QNB serie.  
 Other sprocket sizes are available upon request.  
 Two-part sprockets are available upon request.  
 Round bores are always delivered with keyway.  
 Other bore sizes are available upon request.  
 uni Retainer Rings: See uni Retainer Ring data sheet.  
 Width of tooth = 10.0 mm (0.39 in)  
 Width of sprocket = 25.0 mm (0.98 in)

Max load per sprocket shown does not take bore size into account.  
 Please also ensure that sufficient size shaft is chosen for corresponding load.

For correct sprocket position: See uni Assembly Instructions for uni LPB.  
 For more detailed sprocket information, contact Customer Service.

Non standard material and color: See uni Material and Color Overview.