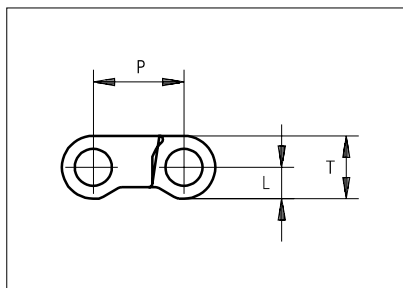
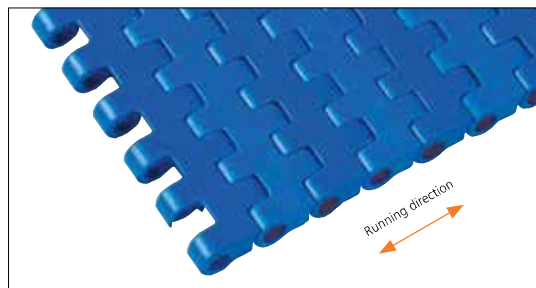


# Plastic Modular Belt

Series **uni M-QNB** Type **C**



Straight running belt  
 Nominal pitch: 12.7 mm (0.50 in)  
 Surface type: Flat  
 Surface opening: Closed  
 Backflex radius: 20.0 mm (0.80 in)  
 Pin diameter: 5 mm (0.20 in)

Belt material & color	POM-SLF <b>B</b>	PP <b>W</b> <b>G</b>	PP <b>B</b>	PE <b>B</b>	POM-EC <b>K</b>		mm	in		mm	in	
						<b>P</b> (Nominal)	12.7	0.50	<b>T</b>	8.8	0.35	
Pin material & color	PP <b>B</b>	PP <b>W</b>	PP <b>B</b>	PE <b>N</b>	PP <b>B</b>		<b>L</b>	4.4	0.17	-	-	-

Non standard material and color: See uni Material and Color Overview.

Alternative pin and lock materials: Solid Lockpin: PA6.6 **D** Lockpin: PBT **LG** PA6.6 **N** **D** PP **B** PE **N**

Belt width		Permissible tensile force (Belt/pin material)						Belt weight (Belt/pin material)						*Min. No. drive sprocket per shaft	Number of wear strips (Min. No.)	
		POM-SFL/PP POM-EC/PP		PP/PP		PE/PE		POM-SFL/PP POM-EC/PP		PP/PP		PE/PE			**Carry (pcs)	**Return (pcs)
mm	in	N	lbf	N	lbf	N	lbf	kg/m	lb/ft	kg/m	lb/ft	kg/m	lb/ft			
25	1.0	475	107	325	73	200	45	0.2	0.14	0.2	0.10	0.1	0.10	1	1	1
39	1.5	741	167	507	114	312	70	0.3	0.21	0.2	0.16	0.2	0.15	1	1	1
45	1.8	855	192	585	132	360	81	0.4	0.25	0.3	0.18	0.3	0.18	2	1	1
77	3.0	1463	329	1001	225	616	138	0.6	0.42	0.5	0.32	0.5	0.31	2	2	2
153	6.0	2907	653	1989	447	1224	275	1.3	0.84	0.9	0.63	0.9	0.61	2	2	2
229	9.0	4351	978	2977	669	1832	412	1.9	1.26	1.4	0.94	1.4	0.91	3	2	2
305	12.0	5795	1303	3965	891	2440	549	2.5	1.68	1.9	1.25	1.8	1.21	4	3	2
382	15.0	7258	1632	4966	1116	3056	687	3.1	2.11	2.3	1.57	2.3	1.51	4	3	2
458	18.0	8702	1956	5954	1338	3664	824	3.8	2.52	2.8	1.88	2.7	1.82	5	4	2
534	21.0	10146	2281	6942	1561	4272	960	4.4	2.94	3.3	2.19	3.2	2.12	6	4	2
610	24.0	11590	2605	7930	1783	4880	1097	5.0	3.36	3.7	2.50	3.6	2.42	7	5	3
687	27.0	13053	2934	8931	2008	5496	1236	5.6	3.79	4.2	2.82	4.1	2.72	7	5	3
763	30.0	14497	3259	9919	2230	6104	1372	6.3	4.20	4.7	3.13	4.5	3.03	8	6	3

Additional standard belt widths are available in steps of 76.3 mm (3.00 in.) Additional non-standard belt widths are available in steps of 38.1 mm (1.50 in.)

1983	78.1	37677	8470	25779	5795	15864	3566	16.3	10.93	12.1	8.13	11.7	7.86	20	14	7
------	------	-------	------	-------	------	-------	------	------	-------	------	------	------	------	----	----	---

Additional standard belt widths are available in steps of 76.3 mm (3.00 in.) Additional non-standard belt widths are available in steps of 38.1 mm (1.50 in.)

2974	117.1	56506	12703	38662	8691	23792	5348	24.4	16.39	18.1	12.19	17.5	11.79	30	20	10
------	-------	-------	-------	-------	------	-------	------	------	-------	------	-------	------	-------	----	----	----

General belt tolerance is +0/-0.4% at 23°C/73°F and 50% RH. For exact belt width contact Customer Service. Non standard belt width on request.

The belt width in PE is 0.3 % wider than the belt width in the table.

\*Max. Load per Drive Sprocket. Belt material: POM-SLF 1000 N (225 lbf), PP 800 N (180 lbf), PE 800 N (180 lbf), POM-EC 1000 N (225 lbf).

\*\*Max. Spacing between wear strips, Carry: 152 mm (6 in); Return: 304 mm (12 in).

= Single Link



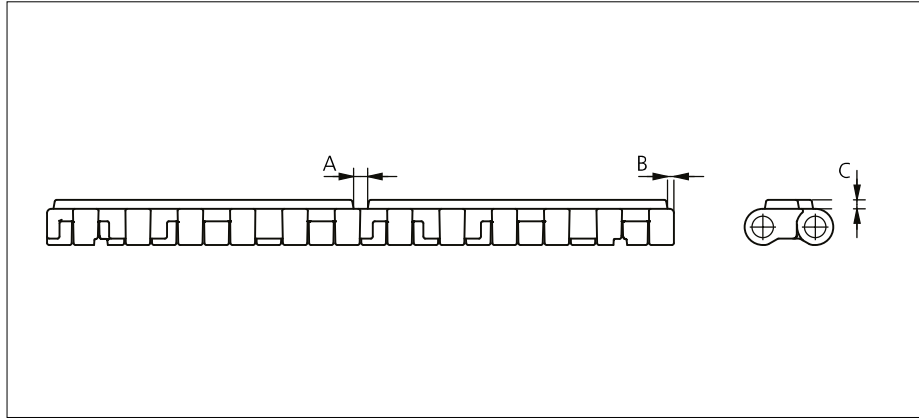
STANDARD

STRAIGHT RUNNING

PITCH 12.7 MM/0.50 IN

## Accessories

### Rubber Top



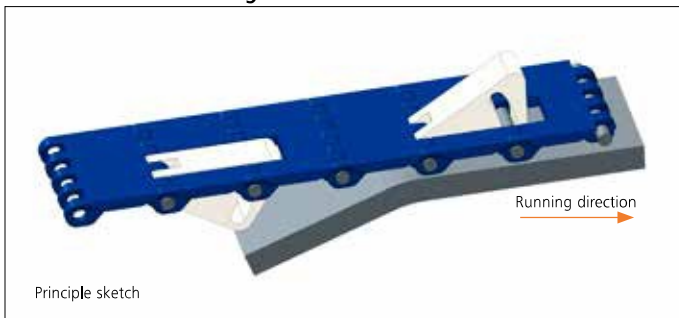
Type	Belt material & color	Rubber material & color	A		B		C		Link size	Width	
			mm	in	mm	in	mm	in		mm	in
Flat	PP <b>W</b>	03 <b>N</b>	3.4	0.13	1.5	0.06	2.2	0.09	K300	75.8	2.98
	PP <b>G</b>	03 <b>K</b>							K600	152.0	5.98

Non Standard material and color: See uni Material and Color Overview.

Rubber Top is not available in belt width below 77 mm (3 in).

## Accessories

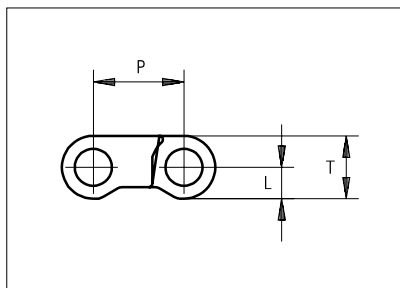
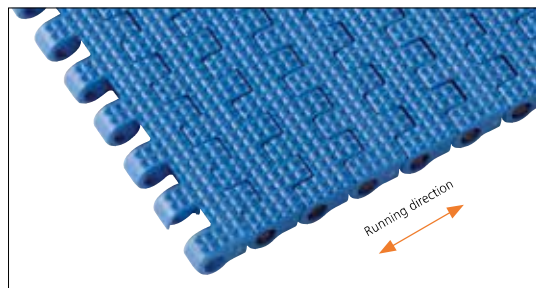
### Non Standard uni AmFlight



Other Non Standard option: See uni AmFlight Overview.

# Plastic Modular Belt

Series **uni M-QNB** Type **NS**



Straight running belt  
 Nominal pitch: 12.7 mm (0.50 in)  
 Surface type: Flat  
 Surface opening: Closed  
 Backflex radius: 20.0 mm (0.80 in)  
 Pin diameter: 5.0 mm (0.20 in)

Belt material & color	POM-SLF <b>B</b>	PE <b>B</b>		mm	in		mm	in
	Pin material & color	PP <b>B</b>	PE <b>N</b>	<b>P</b> (Nominal)	12.7	0.50	<b>T</b>	8.8
				<b>L</b>	4.4	0.17	-	-

Non standard material and color: See uni Material and Color Overview.

Alternative pin and lock materials: Lockpin: PBT **LG** PA6,6 **N** **D** PP **B** PE **N**

Belt width		Permissible tensile force (Belt/pin material)				Belt weight (Belt/pin material)				*Min. No. drive sprocket per shaft	Number of wear strips (Min. No.)	
		POM-SLF/PP		PE/PE		POM-SLF/PP		PE/PE			**Carry (pcs)	**Return (pcs)
mm	in	N	lbf	N	lbf	kg/m	lb/ft	kg/m	lb/ft			
77	3.0	1463	329	616	138	0.6	0.42	0.5	0.31	2	2	2
153	6.0	2907	653	1224	275	1.3	0.84	0.9	0.61	2	2	2
229	9.0	4351	978	1832	412	1.9	1.26	1.4	0.91	3	2	2
305	12.0	5795	1303	2440	549	2.5	1.68	1.8	1.21	4	3	2
382	15.0	7258	1632	3056	687	3.1	2.11	2.3	1.51	4	3	2
458	18.0	8702	1956	3664	824	3.8	2.52	2.7	1.82	5	4	2
534	21.0	10146	2281	4272	960	4.4	2.94	3.2	2.12	6	4	2
610	24.0	11590	2605	4880	1097	5.0	3.36	3.6	2.42	7	5	3
687	27.0	13053	2934	5496	1236	5.6	3.79	4.1	2.72	7	5	3
763	30.0	14497	3259	6104	1372	6.3	4.20	4.5	3.03	8	6	3
839	33.0	15941	3584	6712	1509	6.9	4.62	5.0	3.33	9	6	3
915	36.0	17385	3908	7320	1646	7.5	5.04	5.4	3.63	10	7	4
992	39.1	18848	4237	7936	1784	8.1	5.47	5.9	3.93	10	7	4

Additional standard belt widths are available in steps of 76.3 mm (3.00 in.) Additional non-standard belt widths are available in steps of 38.1 mm (1.50 in.)

1983	78.1	37677	8470	15864	3566	16.3	10.93	11.7	7.86	20	14	7
------	------	-------	------	-------	------	------	-------	------	------	----	----	---

Additional standard belt widths are available in steps of 76.3 mm (3.00 in.) Additional non-standard belt widths are available in steps of 38.1 mm (1.50 in.)

2974	117.1	56506	12703	23792	5348	24.4	16.39	17.5	11.79	30	20	10
------	-------	-------	-------	-------	------	------	-------	------	-------	----	----	----

General belt tolerance is +0/-0.4% at 23°C/73°F and 50% RH. For exact belt width contact Customer Service. Non standard belt width on request.

\*Max. Load per Drive Sprocket. Belt material: POM-SLF 1000 N (225 lbf), PE 800 N (180 lbf)

\*\*Max. Spacing between wear strips, Carry: 152 mm (6 in); Return: 304 mm (12 in)

= Single Link



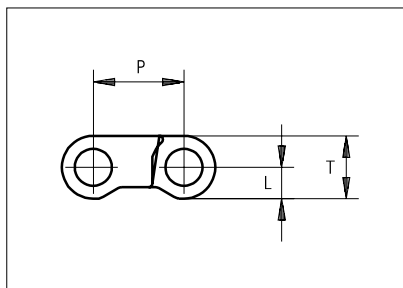
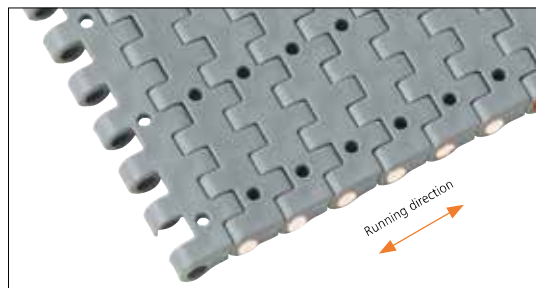
STANDARD

STRAIGHT RUNNING

PITCH 12.7 MM/0.50 IN

# Plastic Modular Belt

Series **uni M-QNB** Type **Vacuum**



Straight running belt  
 Nominal pitch: 12.7 mm (0.50 in)  
 Surface type: Flat  
 Surface opening: Closed  
 Backflex radius: 20.0 mm (0.80 in)  
 Pin diameter: 5 mm (0.20 in)

**Vacuum holes: ø3.2 mm (0.12 in)**

Recommended belt material & color	PP <b>G</b>		mm	in		mm	in
		P (Nominal)	12.7	0.50	T	8.8	0.35
Recommended pin material & color	PP <b>W</b>	L	4.4	0.17	-	-	-

Non standard material and color: See uni Material and Color Overview.

Alternative pin and lock materials: Lockpin: PBT **LG** PA6.6 **N** **D** PP **B** PE **N**

Belt width		Permissible tensile force (Belt/pin material)		Belt weight (Belt/pin material)		*Min. No. drive sprocket per shaft	Number of wear strips (Min. No.)	
		PP/PP		PP/PP			**Carry (pcs)	**Return (pcs)
mm	in	N	lbf	kg/m	lb/ft			
77	3.0	1001	225	0.5	0.32	2	2	2
153	6.0	1989	447	0.9	0.63	2	2	2
229	9.0	2977	669	1.4	0.94	3	2	2
305	12.0	3965	891	1.9	1.25	4	3	2
382	15.0	4966	1116	2.3	1.57	4	3	2
458	18.0	5954	1338	2.8	1.88	5	4	2
534	21.0	6942	1561	3.3	2.19	6	4	2
610	24.0	7930	1783	3.7	2.50	7	5	3
687	27.0	8931	2008	4.2	2.82	7	5	3
763	30.0	9919	2230	4.7	3.13	8	6	3
839	33.0	10907	2452	5.1	3.44	9	6	3
915	36.0	11895	2674	5.6	3.75	10	7	4
992	39.1	12896	2899	6.1	4.07	10	7	4

Additional standard belt widths are available in steps of 76.3 mm (3.00 in.) Additional non-standard belt widths are available in steps of 38.1 mm (1.50 in.)

1983	78.1	25779	5795	12.1	8.13	20	14	7
------	------	-------	------	------	------	----	----	---

Additional standard belt widths are available in steps of 76.3 mm (3.00 in.) Additional non-standard belt widths are available in steps of 38.1 mm (1.50 in.)

2974	117.1	38662	8691	18.1	12.19	30	20	10
------	-------	-------	------	------	-------	----	----	----

General belt tolerance is +0/-0.4% at 23°C/73°F and 50% RH. For exact belt width contact Customer Service. Non standard belt width on request.

\*Max. Load per Drive Sprocket. Belt material: PP 800 N (180 lbf)

\*\*Max. Spacing between wear strips, Carry: 152 mm (6 in); Return: 304 mm (12 in)

= Single Link



NON STANDARD

STRAIGHT RUNNING

PITCH 12.7 MM/0.50 IN

### Sprocket

No. of teeth	Bore size									Overall diameter		Pitch-diameter		Hub-diameter		Dimension A		Dimension B		Single row/Two way	Molded	PA6 LG
	Pilot bore																					
	mm	in	0.78	1.00	1.18	1.25	1.50	1.57	2.36	mm	in	mm	in	mm	in	mm	in					
Z10	✓	●								41.3	1.63	41.1	1.62	28.0	1.10	15.2	0.60	25	0.98	✓	✓	
Z19	✓		●	●	●	■	■			78.3	3.06	77.2	3.04	65.0	2.56	33.7	1.33	43	1.69	✓	✓	
Z28	✓		●	●	●	■	■			114.9	4.52	113.4	4.46	65.0	2.56	52	2.05	61.1	2.41	✓	✓	
Z28								■		114.9	4.52	113.4	4.46	100.0	3.93	52	2.05	61.1	2.41	✓	✓	
Z38	✓				●	■	■			155.5	6.12	153.8	6.06	75.0	2.95	72.2	2.84	81.3	3.20	✓	✓	

■ Molded sprocket

● Molded sprocket

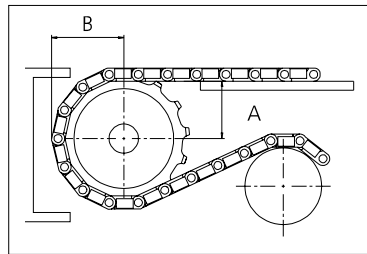


Other sprocket sizes are available upon request.  
 Other bore sizes on sprockets are available upon request.  
 Round bores are always delivered with keyway.  
 Max. load per sprocket shown does not take bore size into account.  
 Please also ensure that sufficient size shaft is chosen for corresponding load.  
 Width of tooth = Single row: 7.0 mm (0.28 in)  
 Width of One-part sprocket = Single row: 20.0 mm (0.79 in)

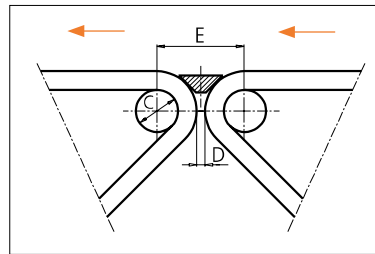
### uni UltraClean Two-Part Sprocket

No. of teeth	Bore size			Overall diameter		Pitch-diameter		Hub-diameter		Dimension A		Dimension B		Single row/Two way	Moulded	PA6 W
	in	1.50	1.57													
	mm	38.1	40.0	mm	in	mm	in	mm	in	mm	in					
Z28		■	■	114.9	4.52	113.4	4.46	80.0	3.15	52.0	2.05	61.1	2.41	✓	✓	
Z38			■	155.5	6.12	153.8	6.06	126.0	4.96	72.2	2.84	81.3	3.20	✓	✓	

■ Moulded uni UltraClean TwoPart Sprocket



Nosebars Min. Dimensions



	mm	in
C	20.0	0.79
D	4.0	0.16
E	41.6	1.64

Width of UltraClean Two-part sprocket = Single row: 44.0 mm (1.73 in)  
 Width of UltraClean Two-part sprocket, tooth = Single row: 7.0 mm (0.28 in)

uni Retainer Rings: See uni Retainer Ring data sheet.  
 For correct sprocket position: See uni Assembly Instructions for uni M-QNB.  
 For more detailed sprocket information, contact Customer Service.