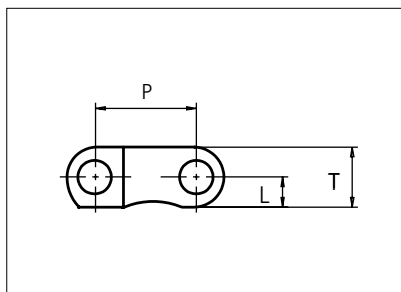
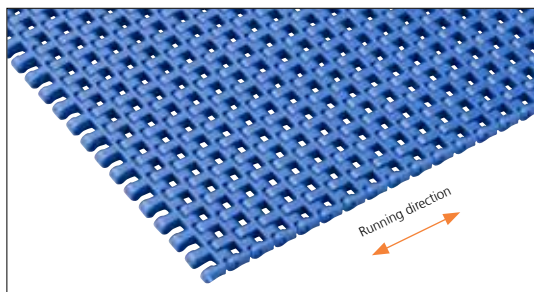


# Plastic Modular Belt

Serie **uni M-TTB** Type **37%**



Straight Running  
 Nominal pitch: 12.7 mm (0.50 in)  
 Surface type: Flat  
 Surface opening: 37%  
 Backflex radius: 12.5 mm (0.49 in)  
 Min flex diameter (nosebar):  
 19.1 mm (0.75 in)  
 Pin diameter: 4.0 mm (0.16 in)

<b>Belt material &amp; color</b>	PP <span style="border: 1px solid black; padding: 0 2px;">W</span> <span style="border: 1px solid black; padding: 0 2px;">B</span>	POM-D <span style="border: 1px solid black; padding: 0 2px;">W</span> <span style="border: 1px solid black; padding: 0 2px;">B</span>		<b>mm</b>	<b>in</b>		<b>mm</b>	<b>in</b>	
<b>Pin material &amp; color</b>	PP <span style="border: 1px solid black; padding: 0 2px;">W</span>	PA6.6 <span style="border: 1px solid black; padding: 0 2px;">B</span>		<b>P (Nominal)</b>	12.7	0.50	<b>T</b>	7.5	0.29
				<b>L</b>	3.8	0.15	-	-	-

Non standard material and color: See uni Material and Color Overview.

Alternative pin material: PA6.6 B PP W

Belt width		Permissible tensile force (Belt/pin material)				Belt weight (Belt/pin material)				*Min No drive sprocket per haft	Number of wear strips (min no)	
		POM-D/PA6.6		PP/PP		POM-D/PA6.6		PP/PP			**Carry (pcs)	**Return (pcs)
mm	in	N	lbf	N	lbf	kg/m	lb/ft	kg/m	lb/ft			
77	3.0	1733	389	1001	225	0.4	0.30	0.3	0.22	2	2	2
154	6.1	3464	779	2002	450	0.9	0.60	0.6	0.43	2	2	2
231	9.1	5196	1168	3002	675	1.3	0.90	1.0	0.65	3	2	2
308	12.1	6927	1557	4003	900	1.8	1.20	1.3	0.87	4	3	2
385	15.2	8659	1947	5003	1125	2.2	1.50	1.6	1.09	4	3	2
462	18.2	10391	2336	6004	1350	2.7	1.80	1.9	1.30	5	4	2
539	21.2	12122	2725	7004	1575	3.1	2.10	2.3	1.52	6	4	2
616	24.2	13854	3114	8005	1799	3.6	2.40	2.6	1.74	7	5	3
693	27.3	15586	3504	9005	2024	4.0	2.70	2.9	1.96	7	5	3
770	30.3	17317	3893	10006	2249	4.5	3.00	3.2	2.17	8	6	3
847	33.3	19049	4282	11006	2474	4.9	3.30	3.6	2.39	9	6	3
924	36.4	20781	4671	12007	2699	5.4	3.60	3.9	2.61	10	7	4
1001	39.4	22512	5061	13007	2924	5.8	3.90	4.2	2.82	11	7	4

Additional standard belt widths are available in steps of 77.0 mm (3.03 in.) Additional non-standard belt widths are available in steps of 12.7 mm (0.50 in)

2002	78.8	45045	10126	26026	5851	11.6	7.80	8.4	5.65	21	14	7
------	------	-------	-------	-------	------	------	------	-----	------	----	----	---

Additional standard belt widths are available in steps of 77.0 mm (3.03 in.) Additional non-standard belt widths are available in steps of 12.7 mm (0.50 in)

2925	115.2	65813	14795	38025	8548	17.0	11.40	12.3	8.26	30	20	10
------	-------	-------	-------	-------	------	------	-------	------	------	----	----	----

General belt tolerance is +0/-0.4% at 23°C/73°F and 50% RH. For exact belt width contact Customer Service. Non standard belt width on request.

\*Max. Load per Drive Sprocket. Belt material: POM-D 1500 N (337 lbf), PP 1000 N (225 lbf).

\*\*Max. Spacing between wear strips, Carry: 152 mm (6 in); Return: 304 mm (12 in)

= Single Link



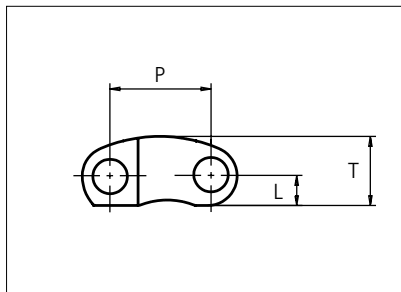
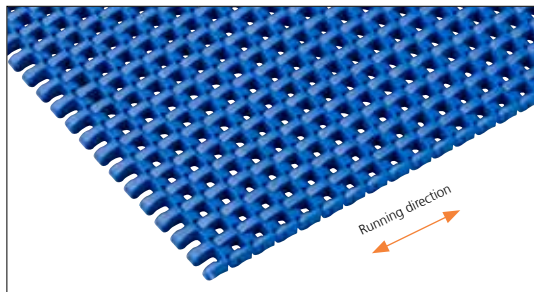
STANDARD

STRAIGHT RUNNING

PITCH 12.7 MM/0.50 IN

# Plastic Modular Belt

Serie **uni M-TTB** Type **37% CS**



Straight Running  
 Nominal pitch: 12.7 mm (0.50 in)  
 Surface type: Curved  
 Surface opening: 37%  
 Backflex radius: 12.5 mm (0.49 in)  
 Min flex diameter (nosebar): 19.1 mm (0.75 in)  
 Pin diameter: 4.0 mm (0.16 in)  
 Curved surface makes perfect circle when 25.4 mm (1.00 in) flex diameter is applied.

<b>Belt material &amp; color</b>	PP <b>B</b>	POM-D <b>B</b>		<b>mm</b>	<b>in</b>		<b>mm</b>	<b>in</b>	
<b>Pin material &amp; color</b>	PP <b>W</b>	PBT <b>LG</b>		<b>P (Nominal)</b>	12.7	0.50	<b>T</b>	8.8	0.35
				<b>L</b>	3.8	0.15	-	-	-

Non standard material and color: See uni Material and Color Overview.

Alternative pin material: PA6.6 **B**

Belt width		Permissible tensile force (Belt/pin material)				Belt weight (Belt/pin material)				*Min No drive sprocket per haft	Number of wear strips (min no)	
		POM-D/PBT		PP/PP		POM-D/PBT		PP/PP			**Carry (pcs)	**Return (pcs)
mm	in	N	lbf	N	lbf	kg/m	lb/ft	kg/m	lb/ft			
77	3.0	1733	389	1001	225	0.5	0.32	0.3	0.22	2	2	2
154	6.1	3464	779	2002	450	1.0	0.64	0.6	0.43	2	2	2
231	9.1	5196	1168	3002	675	1.4	0.96	1.0	0.65	3	2	2
308	12.1	6927	1557	4003	900	1.9	1.28	1.3	0.87	4	3	2
385	15.2	8659	1947	5003	1125	2.4	1.60	1.6	1.09	4	3	2
462	18.2	10391	2336	6004	1350	2.9	1.92	1.9	1.30	5	4	2
539	21.2	12122	2725	7004	1575	3.3	2.24	2.3	1.52	6	4	2
616	24.2	13854	3114	8005	1799	3.8	2.57	2.6	1.74	7	5	3
693	27.3	15586	3504	9005	2024	4.3	2.89	2.9	1.96	7	5	3
770	30.3	17317	3893	10006	2249	4.8	3.21	3.2	2.17	8	6	3
847	33.3	19049	4282	11006	2474	5.2	3.53	3.6	2.39	9	6	3
924	36.4	20781	4671	12007	2699	5.7	3.85	3.9	2.61	10	7	4
1001	39.4	22512	5061	13007	2924	6.2	4.17	4.2	2.82	11	7	4

Additional standard belt widths are available in steps of 77.0 mm (3.03 in.) Additional non-standard belt widths are available in steps of 12.7 mm (0.50 in)

2002	78.8	45045	10126	26026	5851	12.4	8.34	8.4	5.65	21	14	7
------	------	-------	-------	-------	------	------	------	-----	------	----	----	---

Additional standard belt widths are available in steps of 77.0 mm (3.03 in.) Additional non-standard belt widths are available in steps of 12.7 mm (0.50 in)

1925	75.8	43313	9737	25025	5626	11.9	8.02	8.1	5.43	20	13	7
------	------	-------	------	-------	------	------	------	-----	------	----	----	---

General belt tolerance is +0/-0.4% at 23°C/73°F and 50% RH. For exact belt width contact Customer Service. Non standard belt width on request.

\*Max. Load per Drive Sprocket. Belt material: PP 1000 N (225 lbf)

\*\*Max. Spacing between wear strips. Carry: 152 mm (6 in); Return: 304 mm (12 in)

= Single Link



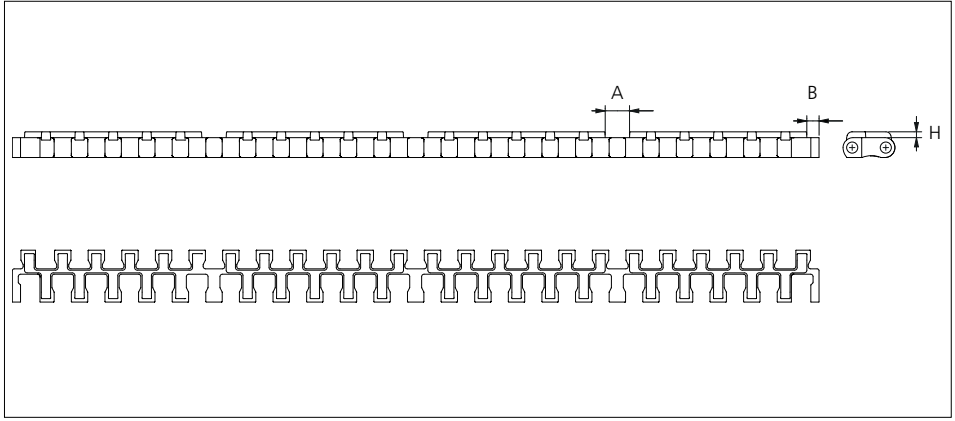
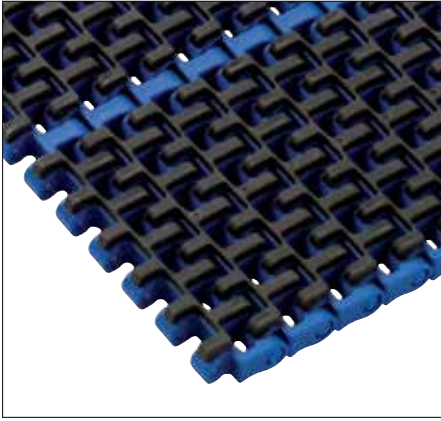
STANDARD

STRAIGHT RUNNING

PITCH 12.7 MM/0.50 IN

## Accessories

### Rubber Top



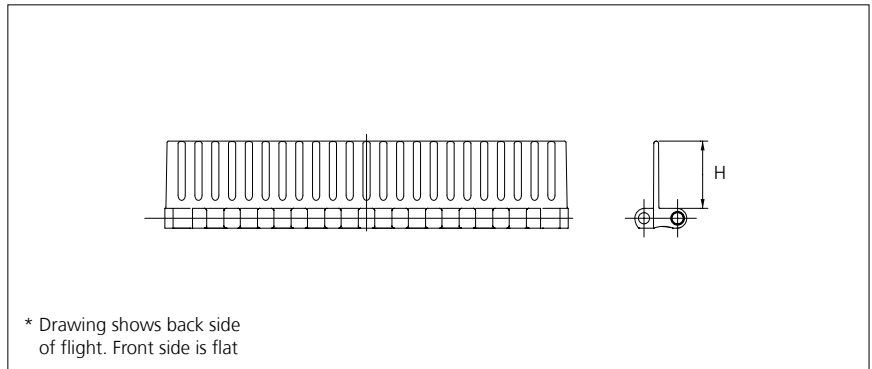
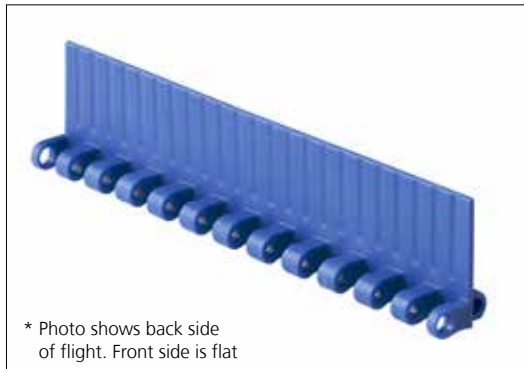
Type	Belt material & color	Rubber material & color	A		B		H		Link size	Width	
			mm	in	mm	in	mm	in		mm	in
Flat	PP <b>W</b>	03 <b>W</b>	9.2	0.36	4.6	0.18	2.2	0.09	K600	154.0	6.1
	PP <b>B</b>	03 <b>K</b>							K1200	308.0	12.1

Other Non Standard Rubber profiles: See uni Rubber Profile Overview.

Backflex radius for Rubber Top: 28 mm (1.10 in)

## Accessories

### Flight



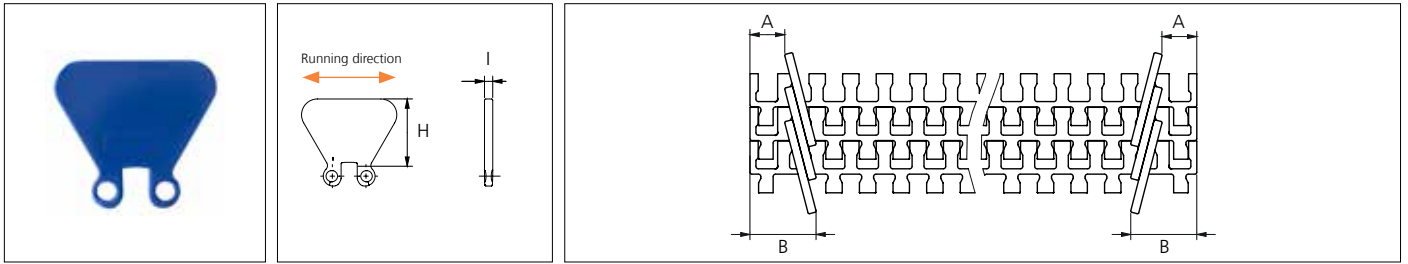
Type	Material & color	H		Link size	Width	
		mm	in		mm	in
Flat/Non Stick*	POM-D <b>W</b> <b>B</b>	25.4	1.00	K600	152.0	5.98

Non standard material and color: See uni Material and Color Overview.

Minimum indent is for uni M-TTB flight 0 mm. Increment: 12.7 mm (0.50 in).

## Accessories

### Side Guard



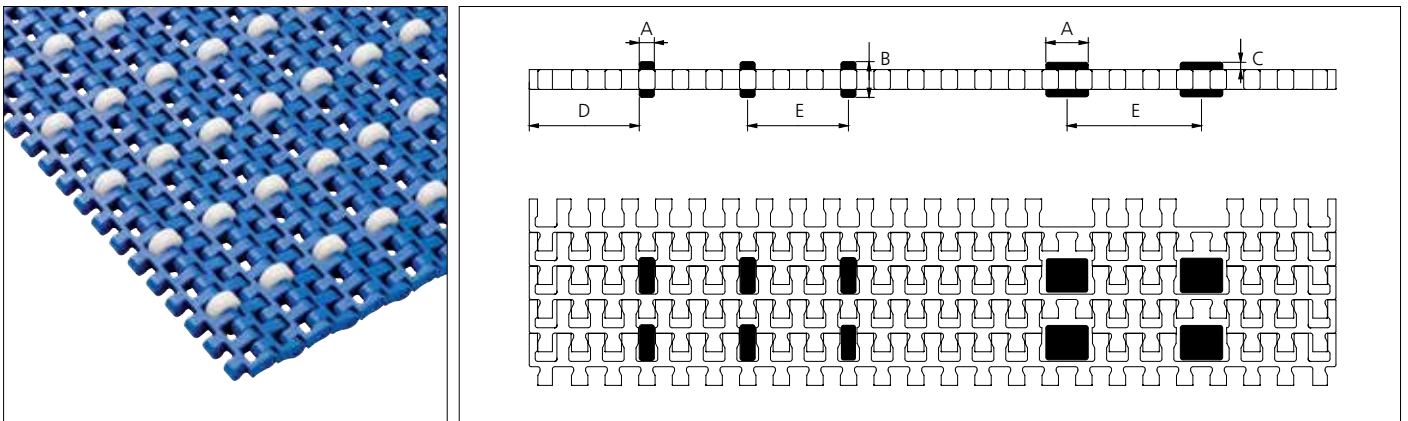
Type	Material & color	*A		B		H		I	
		mm	in	mm	in	mm	in	mm	in
Closed	POM-D <b>W</b> <b>B</b>	13.0	0.50	25.0	0.98	25.4	1.00	3.1	0.12

Non standard material and color: See uni Material and Color Overview.

\*Minimum indent is for uni M-TTB Side Guard. Increment: 12.7 mm (0.50 in).

## Accessories

### Roller

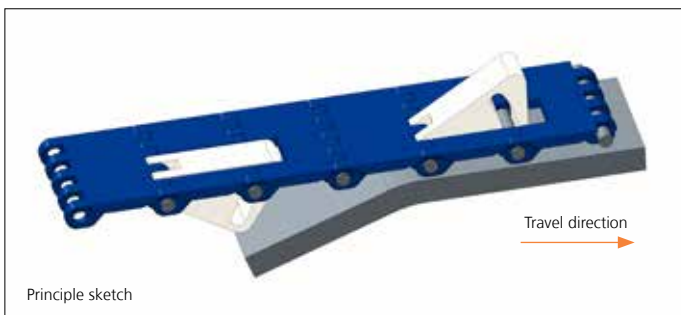


Type	Roller material & color	A		B		C		D (min)		E (min)	
		mm	in	mm	in	mm	in	mm	in	mm	in
Plastic	POM-D <b>W</b>	5.7	0.22	13.0	0.51	2.75	0.11	22.0	0.87	25.4	1.00
		16.0	0.62	13.0	0.51	2.75	0.11	22.0	0.87	38.1	1.50

Non standard Roller material and color: See uni Material and Color Overview.

## Accessories

### Non standard uni AmFlight for uni M-TTB



Other non standard option: See uni Amflight Overview.

### Sprocket

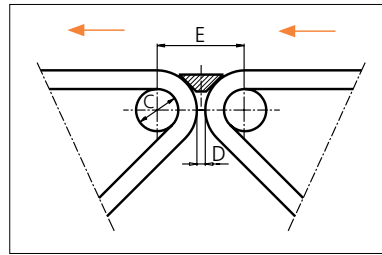
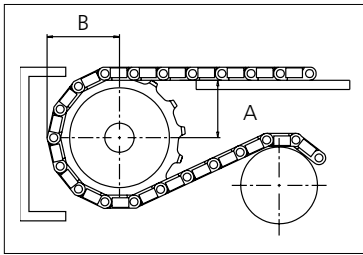
No. of teeth	Bore size										Overall diameter		Pitch diameter		Hub diameter		A-dimension		B-dimension		Single row/Two way	Double row/Two way	Molded PA6 LG	Machined PA6 N
	Pilot bore	in	0.75	0.78	0.98	1.00	1.18	1.25	1.50	1.57														
	mm	19.1	20.0	25.0	25.4	30.0	31.8	38.1	40.0	mm	in	mm	in	mm	in	mm	in							
Z12	x		●	●							52.0	2.05	49.1	1.93	40.7	1.60	20.0	0.79	28.2	1.11		x		x
Z15	x				●	●					64.6	2.54	61.1	2.41	53.3	2.10	26.1	1.03	34.2	1.35		x		x
Z19									■		80.1	3.15	77.2	3.04	68.8	2.71	34.3	1.35	42.3	1.66	x		x	
Z24	x		●	●	●	●	●	■	■		102.1	4.02	97.3	3.83	90.8	3.57	44.5	1.75	52.4	2.06		x		x
Z36	x								■	■	152.3	6.01	145.7	5.74	141.0	5.55	68.8	2.71	76.6	3.01		x		x

■ Molded sprocket    ■ Machined sprocket    ● Machined sprocket



Non standard material and color: See uni Material and Color Overview.

#### Nosebars Min. Dimensions



	mm	in
C	19.0	0.75
D	4.0	0.16
E	40.6	1.60

Other sprocket sizes are available upon request.  
 Two-part sprocket are available upon request.  
 Round bores are always delivered with keyway.  
 Other bore sizes are available upon request.  
 uni Retainer Rings: See uni Retainer Ring data sheet.  
 Width of tooth = 6.5 mm (0.26 in)  
 Width of sprocket = Single row: 17.5 mm (0.69 in)  
 Double row: 30.0 mm (1.18 in)

Max load per sprocket shown does not take bore size into account.  
 Please also ensure that sufficient size shaft is chosen for corresponding load.

For correct sprocket position: See uni Assembly Instructions for uni M-TTB.  
 For more detailed sprocket information, contact Customer Service.