

Paso de 25.4 mm (1.00 pulgadas)



uni QNB – fuerte y fiable

La banda uni QNB se ha desarrollado para obtener una resistencia, rigidez y un mínimo desgaste. La banda es única gracias a su fuerza y fiabilidad. Sus bordes achaflanados permiten una transferencia lateral fácil y eliminan puntos de estancamiento.

La banda uni QNB ha mejorado el rendimiento en las siguientes industrias/aplicaciones:

- Panadería, incluyendo la manipulación y aplicaciones en de bandejas y cajas en pendiente
- Cárnica y avícola, incluyendo líneas de empaquetado y transportadores inclinados de cajas

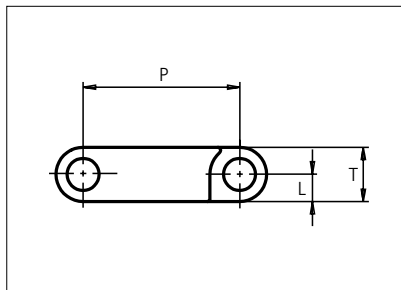
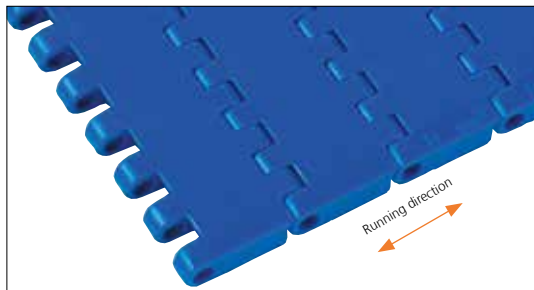
- Bebidas, incluyendo depaletizadoras, mesas de acumulación y transportadores inclinados de cajas
- Fabricación de latas, incluyendo paletizadoras, manipulado de masas y mesas de acumulación
- Cartón ondulado, incluyendo apilado, salida del cartón, carro de transferencia y almacenamiento VIP
- Neumáticos, incluyendo transportadores oscilantes, salida de extrusionado y aplicaciones de inspección
- Manipulación de materiales, incluyendo transportadores inclinados, paletizadoras y líneas de empaquetado

Características del producto y ventajas de funcionamiento:

- Banda bidireccional fuerte para transportadores largos
- Superficie rugosa antideslizante que mejora la seguridad de los operarios
- Sistema de cierre único (lockpin) para un mantenimiento fácil
- Engranaje único de las ruedas, que reduce el efecto pulsante y aumenta la capacidad de carga
- Superficie única de goma, que elimina el desgaste y mejora las propiedades de fricción en aplicaciones inclinadas

Plastic Modular Belt

Series **uni QNB** Type **C**



Straight running belt
 Nominal pitch: 25.4 mm (1.00 in)
 Surface type: Flat
 Surface opening: Closed
 Backflex radius: 40.0 mm (1.57 in)
 Pin diameter: 5.0 mm (0.19 in)

Belt material & color	POM-SLF B	PP B	PP W	mm	in	mm	in		
				P (Nominal)	25.4	1.00	L	4.4	0.17
Pin material & color	PP B		PP W	T	8.8	0.35	-	-	-

Non standard material and color: See uni Material and Color Overview.

Alternative pin and lock materials: Solid Lockpin: PA6.6 **D** Pin: PP **W** PA6.6 **B** PE **W** PBT **LG** and SS304 Endlock: PA6.6 **D**
 Lockpin: PBT **LG** PA6.6 **D** PP **B** **W**

Belt width		Permissible tensile force (Belt/pin material)				Belt weight (Belt/pin material)				*Min. No. drive sprocket per shaft	Number of wear strips (Min. No.)	
		POM-SLF/PP		PP/PP		POM-SLF/PP		PP/PP			**Carry (pcs)	**Return (pcs)
mm	in	N	lbf	N	lbf	kg/m	lb/ft	kg/m	lb/ft			
39	1.5	1365	307	780	175	0.3	0.22	0.2	0.14	1	1	1
51	2.0	1768	397	1010	227	0.4	0.29	0.3	0.18	2	1	1
77	3.0	2695	606	1540	346	0.6	0.43	0.4	0.28	2	2	2
153	6.0	5355	1204	3060	688	1.3	0.86	0.8	0.56	2	2	2
229	9.0	8015	1802	4580	1030	1.9	1.29	1.2	0.83	2	2	2
305	12.0	10675	2400	6100	1371	2.6	1.72	1.6	1.11	3	3	2
382	15.0	13370	3006	7640	1717	3.2	2.16	2.1	1.39	3	3	2
458	18.0	16030	3604	9160	2059	3.8	2.59	2.5	1.66	4	4	2
534	21.0	18690	4202	10680	2401	4.5	3.01	2.9	1.94	4	4	2
610	24.0	21350	4799	12200	2743	5.1	3.44	3.3	2.21	5	5	3
687	27.0	24045	5405	13740	3089	5.8	3.88	3.7	2.49	5	5	3
763	30.0	26705	6003	15260	3430	6.4	4.31	4.1	2.77	6	6	3

Additional standard belt widths are available in steps of 76.3 mm (3.00 in). Additional non-standard belt widths are available in steps of 25.4 mm (1.00 in).

1983	78.1	69405	15602	39660	8916	16.7	11.19	10.7	7.20	14	14	7
------	------	-------	-------	-------	------	------	-------	------	------	----	----	---

Additional standard belt widths are available in steps of 76.3 mm (3.00 in). Additional non-standard belt widths are available in steps of 25.4 mm (1.00 in).

2974	117.1	104090	23399	59480	13371	25.0	16.79	16.1	10.79	20	20	10
------	-------	--------	-------	-------	-------	------	-------	------	-------	----	----	----

General belt tolerance is +0/-0.4% at 23°C/73°F and 50% RH. For exact belt width contact Customer Service. Non standard belt width on request.

*Max. Load per Drive Sprocket. Belt material: POM-SLF 2300 N (517 lbf), PP 1300 N (292 lbf).

**Max. Spacing between wear strips, Carry: 152 mm (6 in); Return: 304 mm (12 in).

= Single Link



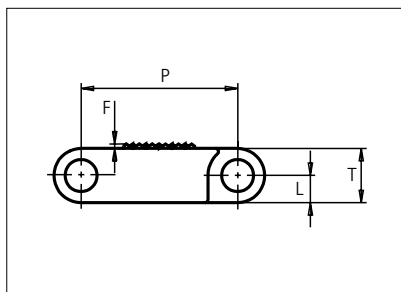
STANDARD

STRAIGHT RUNNING

PITCH 25.4 MM/1.00 IN

Plastic Modular Belt

Series **uni QNB** Type **Rough**



Straight running belt
 Nominal pitch: 25.4 mm (1.00 in)
 Surface type: Rough Top
 Surface opening: Closed
 Backflex radius: 40.0 mm (1.57 in)
 Pin diameter: 5.0 mm (0.31 in)

Belt material & color	POM-SLF B		mm	in		mm	in
Pin material & color	PP B	P (Nominal)	25.4	1.00	L	4.4	0.17
		F	0.8	0.03	T	8.8	0.35

Non standard material and color: See uni Material and Color Overview.

Alternative pin and lock materials: Solid Lockpin: PA6.6 **D** Pin: PP **W** PA6.6 **B** PE **W** PBT **LG** and SS304 Endlock: PA6.6 **D**
 Lockpin: PBT **LG** PA6.6 **D** **N** PP **B** **W**

Belt width		Permissible tensile force (Belt/pin material)		Belt weight (Belt/pin material)		*Min. No. drive sprocket per shaft	Number of wear strips (Min. No.)	
		POM-SLF/PP		POM-SLF/PP			**Carry (pcs)	**Return (pcs)
mm	in	N	lbf	kg/m	lb/ft			
77	3.0	2695	606	0.6	0.43	2	2	2
153	6.0	5355	1204	1.3	0.86	2	2	2
229	9.0	8015	1802	1.9	1.29	2	2	2
305	12.0	10675	2400	2.6	1.72	3	3	2
382	15.0	13370	3006	3.2	2.16	3	3	2
458	18.0	16030	3604	3.8	2.59	4	4	2
534	21.0	18690	4202	4.5	3.01	4	4	2
610	24.0	21350	4799	5.1	3.44	5	5	3
687	27.0	24045	5405	5.8	3.88	5	5	3
763	30.0	26705	6003	6.4	4.31	6	6	3
839	33.0	29365	6601	7.0	4.74	6	6	3
915	36.0	32025	7199	7.7	5.17	7	7	4
992	39.1	34720	7805	8.3	5.60	7	7	4

Additional standard belt widths are available in steps of 76.3 mm (3.00 in). Additional non-standard belt widths are available in steps of 25.4 mm (1.00 in).

1983	78.1	69405	15602	16.7	11.19	14	14	7
------	------	-------	-------	------	-------	----	----	---

Additional standard belt widths are available in steps of 76.3 mm (3.00 in). Additional non-standard belt widths are available in steps of 25.4 mm (1.00 in).

2974	117.1	104090	23399	25.0	16.79	20	20	10
------	-------	--------	-------	------	-------	----	----	----

General belt tolerance is +0/-0.4% at 23°C/73°F and 50% RH. For exact belt width contact Customer Service. Non standard belt width on request.

*Max. Load per Drive Sprocket. Belt material: POM-SLF 2300 N (517 lbf), PP 1300 N (292 lbf).

**Max. Spacing between wear strips, Carry: 152 mm (6 in); Return: 304 mm (12 in).

= Single Link



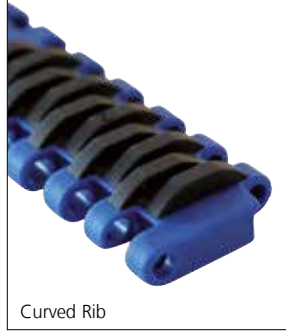
STANDARD

STRAIGHT RUNNING

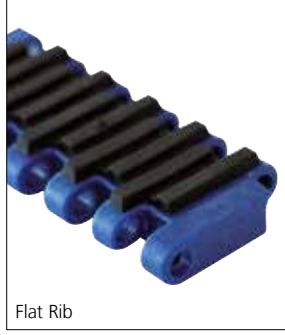
PITCH 25.4 MM/1.00 IN

Accessories

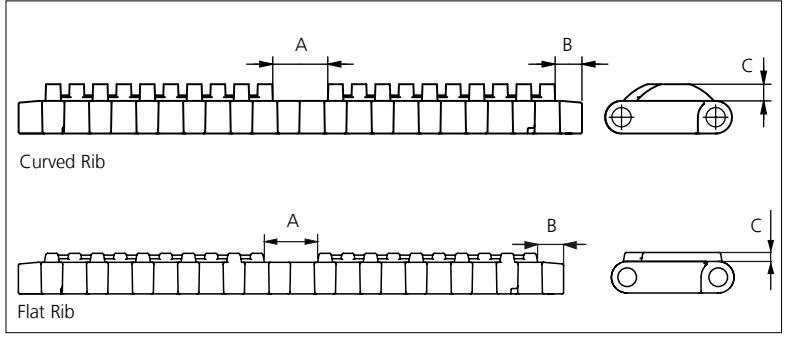
Rubber Top



Curved Rib



Flat Rib



Curved Rib

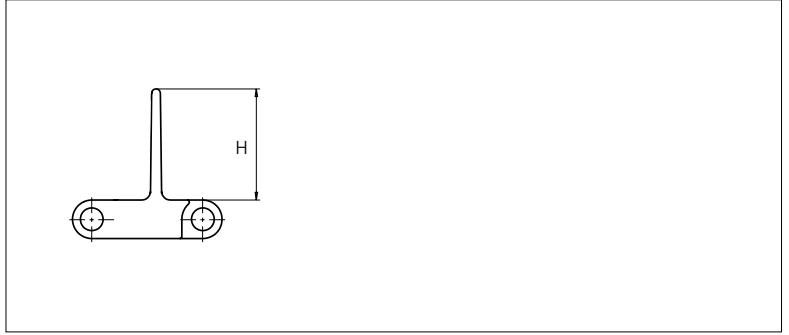
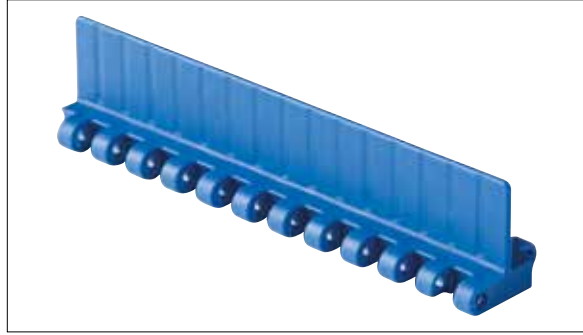
Flat Rib

Type	Belt Material & color	Rubber Material & color	A		B		C		Link size	Width	
			mm	in	mm	in	mm	in		mm	in
Curved Rib	PP B	03 K	14.9	0.59	7.3	0.29	4.5	0.18	K300	75.8	2.98
			K600	152.0	5.98						
Flat Rib	PP B	03 K	14.85	0.58	7.25	0.29	2.5	0.10	K300	75.8	2.98
			K600	152.0	5.98						

Non Standard material and color: See uni Material and Color Overview.

Accessories

Flight

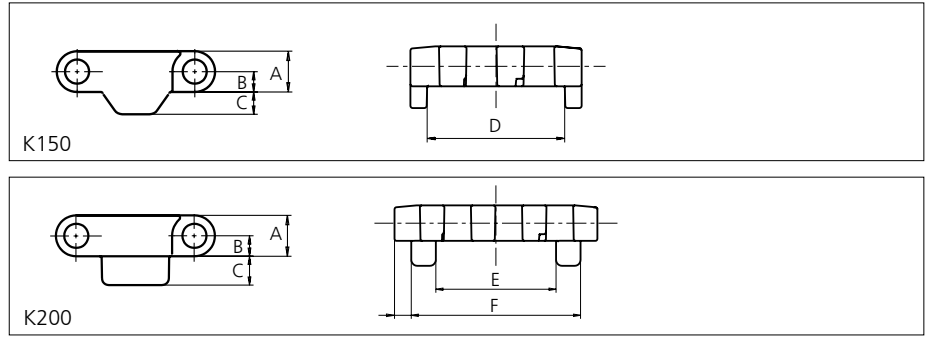
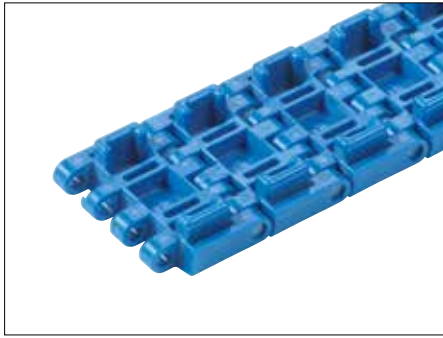


Type	Flight Material & color	H		Link size	Width		Indent	
		mm	in		mm	in	mm	in
Non Stick	PP-I B W	25.4	1.00	K600	152.0	5.98	0.0	0.00
	POM-SLF B							

Non Standard material and color: See uni Material and Color Overview.

Accessories

NON STANDARD – Tab – Single Link Only



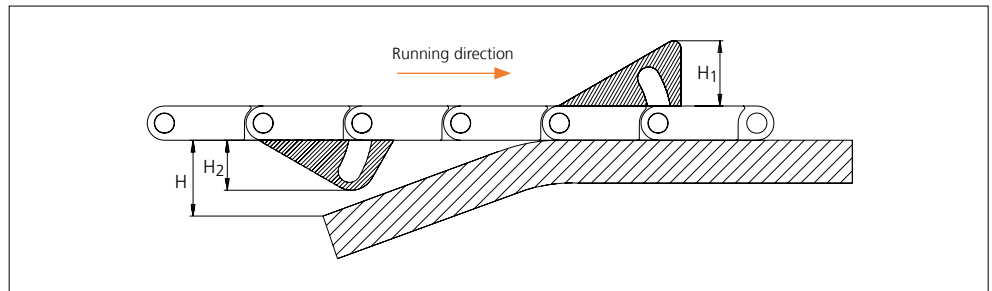
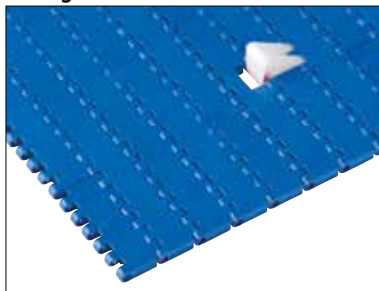
Type	Recommended link material & color	Recommended pin material & color	A		B		C		D		E		F		Link Size
			mm	in	mm	in	mm	in	mm	in	mm	in	mm	in	
Bottom Guide	POM-SLF B	PA6.6 D	8.8	0.35	4.4	0.17	4.8	0.19	30.3	1.19	29.9	1.18	42.1	1.66	K150 K200
	PP B														

⚡ Solid Lockpin as default lock system. Alternative pin materials & color: PBT **LG**

Non Standard material and color: See uni Material and Color Overview.

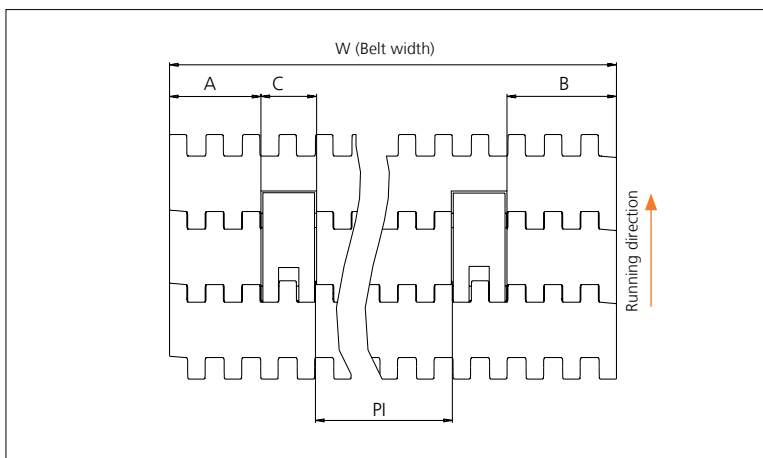
Accessories

AmFlight



Type	Material & color	H		H ¹		H ²	
		mm	in	mm	in	mm	in
Push	PE W	17.0	0.67	17.0	0.67	14.0	0.55

Other Non Standard option: See uni AmFlight Overview.



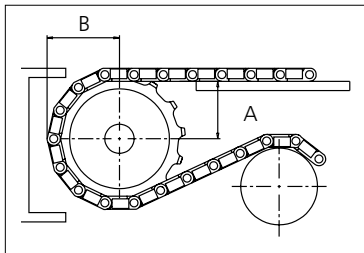
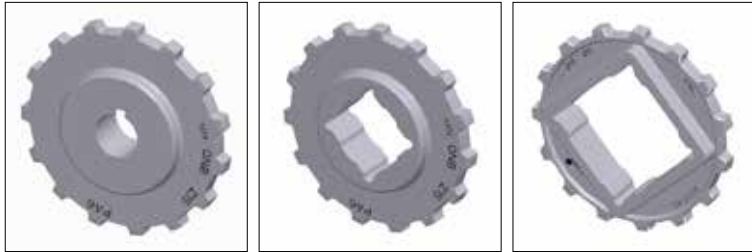
	mm	in
A min	32.4	1.28
B min	38.5	1.52
C	18.0	0.71
PI max	W - 106.9	W - 4.21
PI min	32.7	1.29

Increment: 12.7 mm (0.50 in)

Sprocket

No. of teeth	Bore size									Overall diameter		Pitch diameter		Hub diameter		Dimension A		Dimension B		Single row/Two way	Double row/Two way	Molded PA6 LG	Machined PA6 N
	Pilot bore	1.00		1.18		1.25		1.50															
	mm	25.4	30.0	31.8	38.1	40.0	60.0	63.5	mm	in	mm	in	mm	in	mm	in	mm	in					
Z10	x		●	●	●	■	●			80.3	3.16	82.2	3.24	65.0	2.56	34.7	1.36	45.5	1.79	x		x	
Z12	x		●	●	●	■	●			96.8	3.81	98.1	3.86	70.0	2.76	43.0	1.69	53.5	2.11	x		x	
Z15	x			●	●	■	■	■	■	121.5	4.78	122.2	4.81	¹ 70.0 ² 100.0 ² 104.0	2.76 3.94 4.09	55.4	2.18	65.5	2.58	x		x	
Z18	x			●	●	■	■	■	■	146.0	5.75	146.3	5.76	¹ 70.0 ² 104.0 ¹ 120.0	2.76 4.09 4.72	67.6	2.66	77.5	3.05	x		x	
Z19	x			●	●	■	■	■	■	154.2	6.07	154.3	6.07	¹ 70.0 ¹ 120.0	2.76 4.72	71.7	2.82	81.6	3.21	x		x	

● Moulded sprocket ■ Moulded sprocket ■ Moulded sprocket



Same sprocket type as for the uni QNB serie.
 Other sprocket sizes are available upon request.
 Two-part sprockets are available upon request.
 Round bores are always delivered with keyway.
 Other bore sizes are available upon request.
 uni Retainer Rings: See uni Retainer Ring data sheet.
 Width of tooth = 10.0 mm (0.39 in)
 Width of sprocket = 25.0 mm (0.98 in)

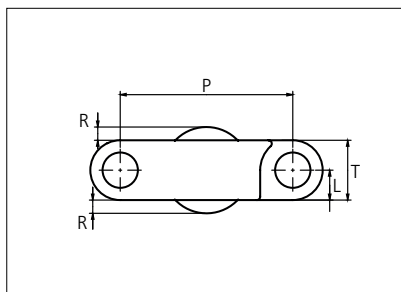
Max load per sprocket shown does not take bore size into account.
 Please also ensure that sufficient size shaft is chosen for corresponding load.

For correct sprocket position: See uni Assembly Instructions for uni QNB.
 For more detailed sprocket information, contact Customer Service.

Non standard material and color: See uni Material and Color Overview.

Plastic Modular Belt

Series **uni QNB** Type **Ball**



Straight running belt
 Nominal pitch: 25.4 mm (1.00 in)
 Surface type: Ball
 Surface opening: Closed
 Backflex radius: 25.0 mm (0.98 in)
 Pin diameter: 5.0 mm (0.20 in)

Belt material & color	POM-SLF B		mm	in		mm	in
Ball material & color	PA6.6 N B	P (Nominal)	25.4	1.00	R	1.95	0.08
Pin material & color	PP B	L	4.4	0.17	T	8.8	0.35

Non standard material and color: See uni Material and Color Overview.

Belt width		Permissible tensile force (Belt/pin material)		Belt weight (Belt/pin material)		*Min No drive sprocket per shaft	Number of wear strips (min no)	
		POM-SLF/PP		POM-SLF/PP			**Carry (pcs)	**Return (pcs)
mm	in	N	lbf	Kg/m	lb/ft			
153	6.0	3443	774	1.4	0.96	2	2	2
229	9.0	5153	1158	2.1	1.43	2	2	2
305	12.0	6863	1543	2.8	1.91	3	3	2
381	15.0	8573	1927	3.5	2.38	3	3	2
457	18.0	10283	2312	4.3	2.86	4	4	2
533	21.0	11993	2696	5.0	3.33	4	4	2
609	24.0	13703	3080	5.7	3.81	5	5	3
685	27.0	15413	3465	6.4	4.28	5	5	3
761	30.0	17123	3849	7.1	4.76	6	6	3
838	33.0	18855	4239	7.8	5.24	6	6	3
914	36.0	20565	4623	8.5	5.71	7	7	4
990	39.0	22275	5007	9.2	6.19	7	7	4
1066	42.0	23985	5392	9.9	6.66	8	8	4
1979	77.9	44528	10010	18.4	12.37	14	14	7
2968	116.9	66780	15012	27.6	18.55	20	20	10

Additional standard belt widths are available in steps of 76.3 mm (3.00 in).

1979	77.9	44528	10010	18.4	12.37	14	14	7
------	------	-------	-------	------	-------	----	----	---

Additional standard belt widths are available in steps of 76.3 mm (3.00 in).

2968	116.9	66780	15012	27.6	18.55	20	20	10
------	-------	-------	-------	------	-------	----	----	----

General belt tolerance is +0/-0.4% at 23°C/73°F and 50% RH. For exact belt width contact Customer Service.

*Max. Load per Drive Sprocket. Belt material: POM-SLF 1840 N (414 lbf)

**Max. Spacing between wear strips, Carry: 152 mm (6 in); Return: 304 mm (12 in).

= Single Link



STANDARD

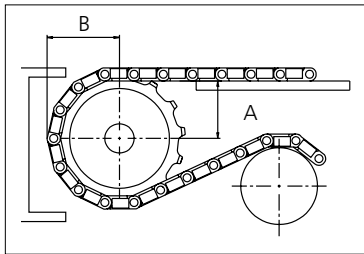
STRAIGHT RUNNING

PITCH 25.4 MM/1.00 IN

Sprocket

No. of teeth	Bore size						Overall diameter		Pitch diameter		Hub diameter		Dimension A		Dimension B		Single row/Two way	Double row/Two way	Molded	Machined
	Pilot bore	1.50		1.57		2.36														
	mm	38.1	40.0	60.0	63.5	mm	in	mm	in	mm	in	mm	in							
Z15	x		■	■	■	■	121.5	4.78	122.5	4.82	100.0	3.93	55.4	2.18	66.1	2.60	x			x
Z18	x		■	■	■	■	146.1	5.75	146.3	5.76	120.0	4.72	67.6	2.66	78.4	3.08	x			x
Z19	x		■	■	■	■	154.2	6.07	154.3	6.07	125.0	4.92	71.7	2.82	82.5	3.24	x			x

■ Machined sprocket



Other sprocket sizes are available upon request.
 Two-part sprockets are available upon request.
 Round bores are always delivered with keyway.
 Other bore sizes are available upon request.
 uni Retainer Rings: See uni Retainer Ring data sheet.
 Width of tooth = 8.0 mm (0.31 in)
 Width of sprocket = 25.0 mm (0.98 in)

Max load per sprocket shown does not take bore size into account.
 Please also ensure that sufficient size shaft is chosen for corresponding load.

For correct sprocket position: See uni Assembly Instructions for uni QNB Ball.
 For more detailed sprocket information, contact Customer Service.

Non standard material and color: See uni Material and Color Overview.