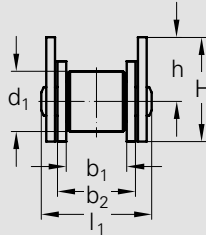
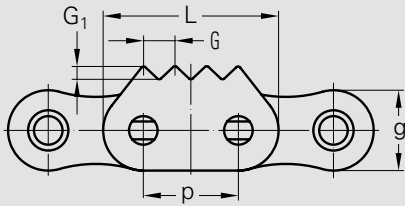
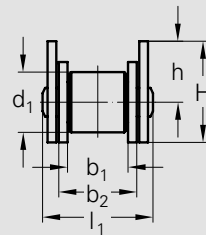
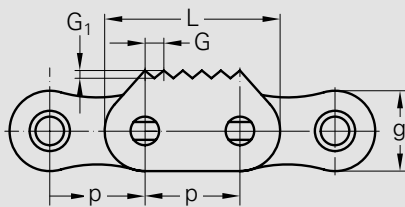


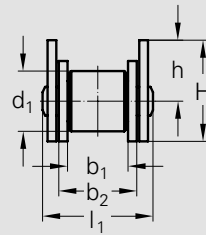
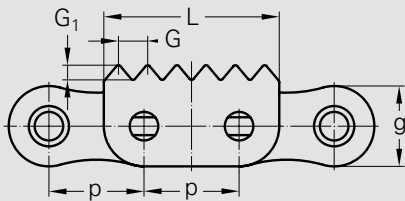
Profil 1
Profile 1



Profil 2
Profile 2



Profil 3
Profile 3

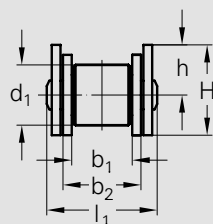
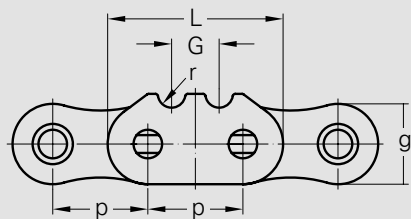


Profil 4
Profile 4

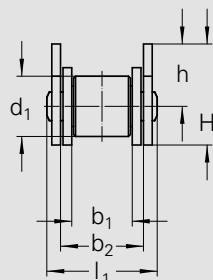
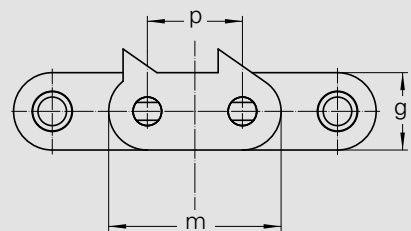
WITRA [®]	Teilung		Innere Breite Inner width	Innengliedbreite Inner link width	Rollen-Ø Roller-Ø	Laschenhöhe Plate height	Maß über Bolzen Width over pin	Mitnehmer-Maße					Profil Profile	Gewicht Weight	Verbindungs-glieder Connecting links
	Pitch							Attachment dimensions							
	p							G	G ₁	H	h	L			
No.	mm	inch	b ₁ min.	b ₂ max.	d ₁ max.	g max.	l ₁ max.	mm	mm	mm	mm	mm	kg/m	Type	
12B1-F3	19,05	¾	11,68	15,62	12,07	16,10	22,70	6,35	2,72	21,50	13,5	35,05	2*	1,48	A, E
16B1-1170	25,40	1	17,02	25,40	15,88	21,00	36,10	4,23	4,00	26,50	16,00	46,00	2	2,94	A, S
16B1-1185	25,40	1	17,02	25,40	15,88	21,00	36,10	4,00	4,00	26,50	16,00	46,00	4	3,03	A, S
16B1-1185a	25,40	1	17,02	25,40	15,88	21,00	36,10	4,00	4,00	26,50	16,00	46,00	4**	2,87	A, S
16B1-1186	25,40	1	17,02	25,40	15,88	21,00	36,10	4,00	4,00	26,50	16,00	46,00	4*	3,23	A, S
20B1-1350	31,75	1 ¼	19,56	29,00	19,05	26,40	43,20	-	6,50	33,00	19,80	-	1	4,07	A, S
20B1-1310	31,75	1 ¼	19,56	29,00	19,05	26,40	43,20	6,35	3,20	33,00	19,80	-	3	4,17	A, S
24B1-4STC	38,10	1 ½	25,40	37,90	25,40	33,40	53,40	13,00	5,60	35,00	18,30	70,40	2	7,19	A, S

* Verzahnung an Innen- und Außenlaschen / * Gearing on inner and outer plates
outerplates alternating assembled

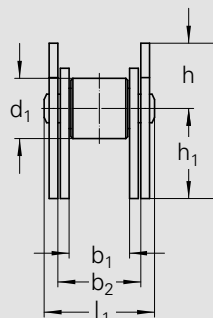
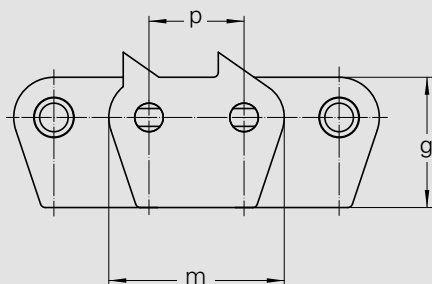
** Verzahnte Außenlaschen wechselseitig montiert / ** Toothed



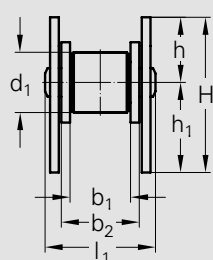
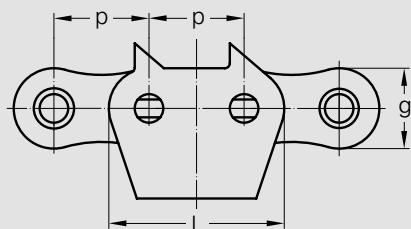
Profil 5
Profile 5



Profil 6
Profile 6



Profil 7
Profile 7



Profil 8
Profile 8

WITRA®	Teilung		Innere Breite	Innengliedbreite	Rollen-Ø	Laschenhöhe	Maß über Bolzen	Mitnehmer-Maße						Profil	Gewicht	Verbindungs-glieder
	Pitch							Inner width	Inner link width	Roller-Ø	Plate height	Width over pin	Attachment dimensions			
	p		b ₁ min.	b ₂ max.	d ₁ max.	g max.	l ₁ max.						L	G	r	H
No.	mm	inch	mm	mm	mm	mm	mm	mm	mm	mm	mm	mm	mm	mm	kg/m	Type
16B1-1180	25,4	1	17,02	25,40	15,88	21,00	36,10	46,00	12,00	3,50	22,50	12,20	-	5	2,84	A, S
16B1-1161	25,4	1	17,02	25,40	15,88	21,00	36,10	46,00	-	-	27,50	16,00	-	6	3,03	A, S
32B1-1872	50,8	2	30,99	45,50	29,21	42,20	67,40	92,80	-	-	64,00	21,00	43,00	7	11,83	A, S
32B1-1874	50,8	2	30,99	45,50	29,21	42,20	67,40	92,80	-	-	73,00	30,00	43,00	8	12,27	A, S